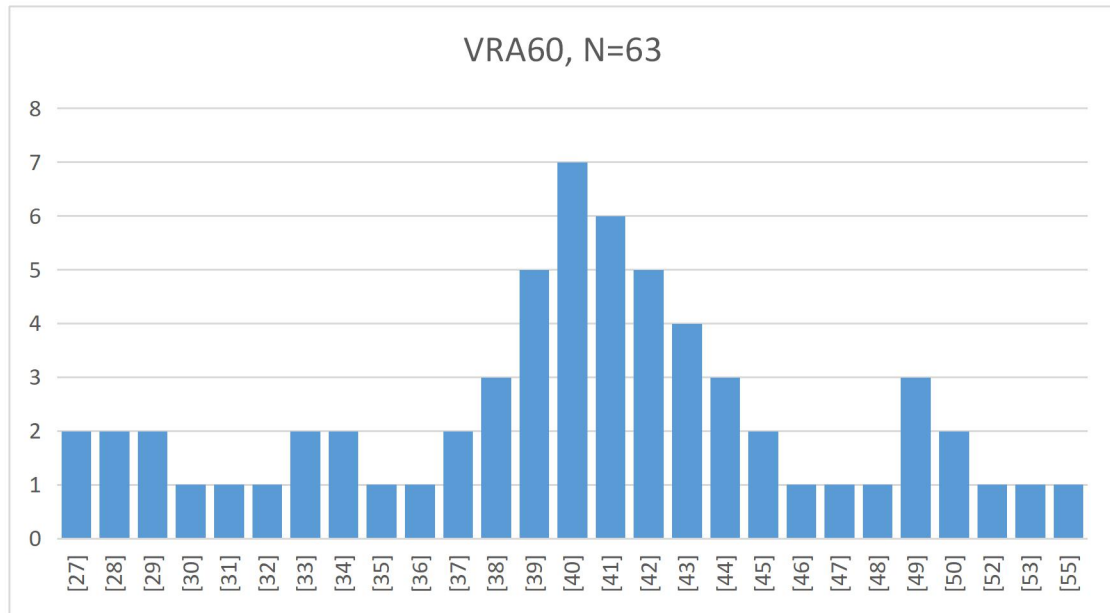


VRA60 Stats & Norm

June 16th, 2021

VRA60 reached 63 candidates, a sample quite sufficient for providing some useful information and a decent norming approach.

Graph, descriptive figures & correlation table follow; next report will be presented at a total of 80-100 candidates.



Mean	40,11
Median	40
Mode	40
SD	6,54
Variance	42,71
SEM	0,82
Cronbach's α	0,92

Native Vs Non-native speakers (English)

Test's language is English - note, however, that despite speaking English fluently (almost), author's native language isn't English. Ideally, items of such tests shouldn't be based on idioms or significantly culturally-influenced - in terms of reasoning over provided concepts. Unfortunately, this sometimes can't be avoided. Difference in performance between native and non-native speakers should always be investigated and if needed, norms should be adapted accordingly.

	Mean	Max	Min	Median	Mode
Non-native speakers (41)	39,5	52	27	40	40
Native Speakers (22)	41,2	55	27	40,5	49

Groups' sizes different significantly. It is quite probable that different estimations will be provided in the future for each of these groups. More data will lead to a safe conclusion.

Correlation with standard psychometric batteries & other relevant tests

Correlations with standard psychometric batteries & tests by Dr. Jouve, follow. Tests used : WAIS, RAPM, BLS-4T, CCFIT, SBIS RSPM, Raven's 2, FRT-A, FRT-B, IST70R, ACT (their theoretical score-to-IQ correlation), Unknown Mensa Entrance Test, C-09, CCAT, JCCES, JCTI, TRI, IAW, TLAP-R & NVCPE-R.

Test	Pairs (Range)	Rho	MeanRaw	MeanIQ
Total	50 (95-175)	0,84	42,14	141,82
Supervised	40 (95-170)	0,91	41,30	141,13
WAIS	22 (95-170)	0,90	41,05	140,36
Raven's Series	14 (126-160)	0,69	42,79	144,29
Jouve	40 (121-170)	0,84	42,43	143,55
JCTI/TRI	18 (121-158)	0,82	41,89	142,17
JCTI	13 (121-157)	0,78	41,31	140,85
C-09	11 (132-170)	0,95	42,73	142,91
CCAT/JCCES	6 (130-170)	0,94	45,50	149,33

Raw Score to IQ (Theoretical IQ) transformation

Norm follows, according to aforementioned correlations.

RS: Raw score on VRA60 (x/60).

TIQ: Theoretical IQ attributed to raw score points achieved (M=100, SD=15).

RS	TIQ	RS	TIQ
27	<=107	44	146
28	109	45	148
29	112	46	151
30	114	47	153
31	116	48	155
32	119	49	158
33	121	50	160
34	123	51	162
35	125	52	164
36	128	53	167
37	130	54	169
38	132	55	171
39	135	56	174
40	137	57	176
41	139	58	178
42	141	59	181
43	144	60	>=185